



# AUTOMAGIC SILVER MACHINE

## EARTH QUAKE MKII



Connection for an external  
AC-Adapter 9V DC.

Parallel Output 2

**New! Auto Magic  
Revolution Sensor,  
touch sensitive.**

Technical Data:  
Power Supply Specifications:  
-9 V DC Battery  
-9 - 18 V DC AC-Adapter  
Polarity:  
tip negative /barrel positive.  
Resting Power Requirements  
2.68 mA  
Silver Machine:  
Earth-Bottom: 207-3600 Hz.  
Earth Quake:  
Earth-Bottom: 41-2350 Hz.  
Quake: 0,8 Q - 6,0 Q  
Mode Select:  
-classic: Wah  
-modern: Mixed-Mode

Status-LED

Output

Input

Earth

2 3

**Earth Switch:**  
3 positions for the fre-  
quency-range of the fil-  
ter.

Quake

1 2 4

**Quake Switch:**  
4 positions for the filter-  
quality (Q Factor).

Mode Select  
Classic / Modern

New!  
**Mode Select**  
for 2 sound presets:  
*modern/classic*

**Footswitch:**  
Continuous On

Guarantee:  
EU: 24 Months  
USA: 12 Months

## Silver Machine, Earth Quake MKII. Operating manual Mod. 2005

The Silver Machine combines the best sound characteristics of its forerunners with the most modern technology and its own innovative new developments to create a truly first class wah wah effect. The pedal is unique thanks to its "AutoMagic" functionality and its variable filter which provides 12 different sounds.

### Activation – The "Automagic Revolution Sensor"

This patented activation device is unique to the Automagic Wah and allows the user to turn on the wah effect by simply stepping on the treadle – no more "click" type switch at the end of the pedal travel! This revolutionary control makes changes between Wah and Clean sounds simple, fast, and effective.

### "Continuous On" Switch

from model 2005 on, use this switch to turn the Wah effect on continuously, enabling the use of the Automagic Wah as a static filter (ala Michael Schenker's "half-cocked" wah sound).

### Mode Select, Modern, Clean:

The mini toggle switches between the "Classic" and "Modern" mode. In "Classic" mode the pedal works like a regular wah, it passes the effected ( wet) signal only. ( 100% wet).

In "Modern" mode, the pedal allows for an effect/original signal ( wet/dry) mix.

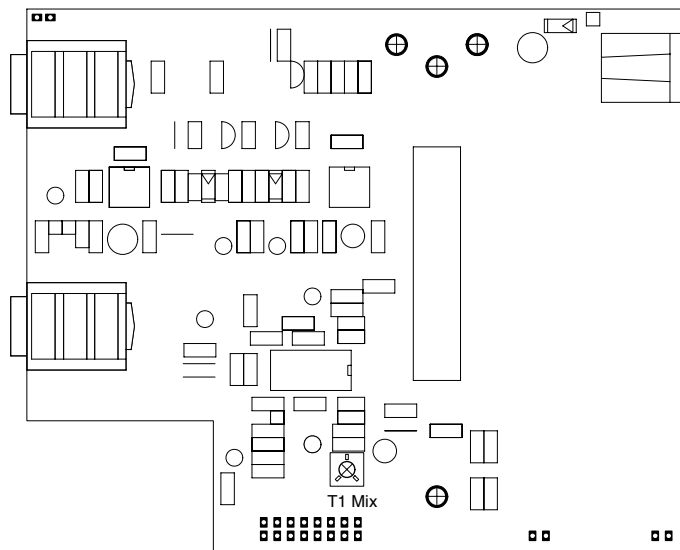
### Earth:

The "Earth" control is represented by a three-way rotary switch that provides a choice of three frequency ranges.

Silver Machine:	Earth Quake:
1. 207 - 3570 Hz.	1. 41 - 930 Hz.
2. 360 - 3570 Hz.	2. 60 - 930 Hz.
3. 256 - 1750 Hz.	3. 236 - 2350 Hz.

### Fine Tuning:

The Silver Machine can be adjusted to suit your tastes. This involves opening the housing to reveal the circuit board. On the board is a trim potentiometer marked "T1 Mix". This controls the ratio of the effects signal to the original in "Modern" mode. Be careful not to dislodge the battery cable when adjusting this trimmer.



### Changing the battery

The Silver Machine's battery is located in a compartment recessed into the underside of the housing and accessible from outside it. In addition a power supply socket for 9 to 18 Volt DC (max) is also included. With a current consumption of only 2.68 mA, a good 9V battery will last in the Silver Machine for well over 100 hours.

### Care and maintenance

Just as with any other electronic device subjected to use under high-stress conditions, the Silver Machine benefits from good care and maintenance.

Occasionally the pedal itself should be carefully readjusted using two 8 mm Allen keys. It is also recommended that the fader should occasionally be sprayed with a cleaning agent. For this purpose a small service hole is provided on the underside of the device. The spray tube should carefully be inserted into the fader beneath this hole and the equipment should then be wiped dry. The equipment should not be stored in damp conditions to prevent the oxidation of sensitive electronic components.

The housing is stainless steel and requires no special maintenance.

### Important!

Pressure should not be put on the **Sensor** when it is in storage since this will considerably reduce the life-expectancy of the equipment.

**Garantee Europe:** 24 months, not including **consumables**.